



Assembly Instructions

- | | |
|--|--|
| <p>..... Mountain fold(dotted line)
*Make a mountain fold.</p> <p>- - - - - Valley fold
(dashed and dotted line)
*Make a valley fold.</p> <p>▲ Black triangle
Glue here</p> | <p>——— Scissors line(solid line)
*Cut along the line.</p> <p>——— Cut in line(solid line)
*Make a cut.</p> <p>△ White triangle
Glue the back</p> |
|--|--|



scissors, paste, a used ballpoint pen (tracing along the fold lines makes them easier to fold)

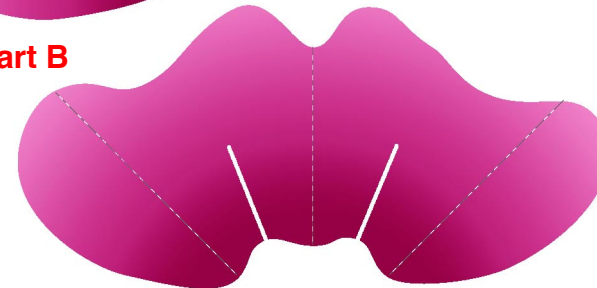


Caution: Glue, scissors, and other tools may be dangerous to young children so be sure to keep them out of the reach of young children.

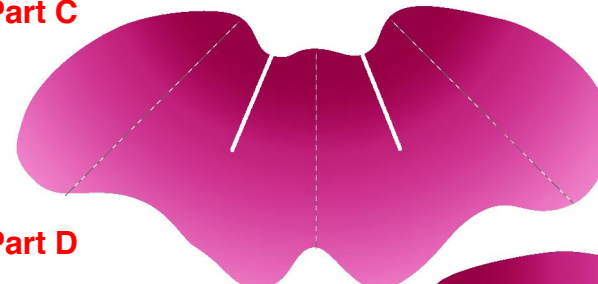
● Part A



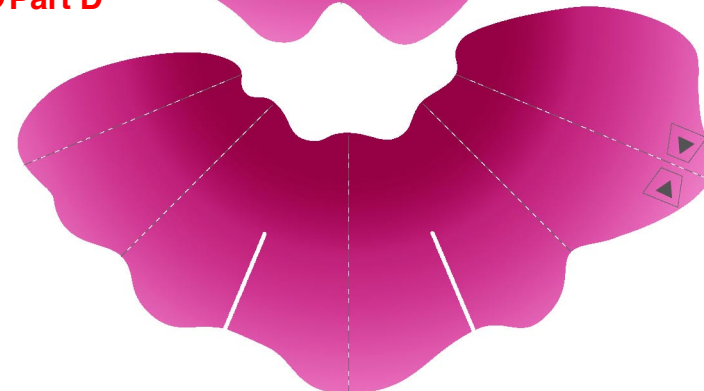
● Part B



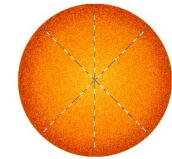
● Part C



● Part D



● Part E



● Supports



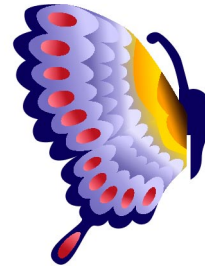
● Butterfly (Left)



● Butterfly (Right)



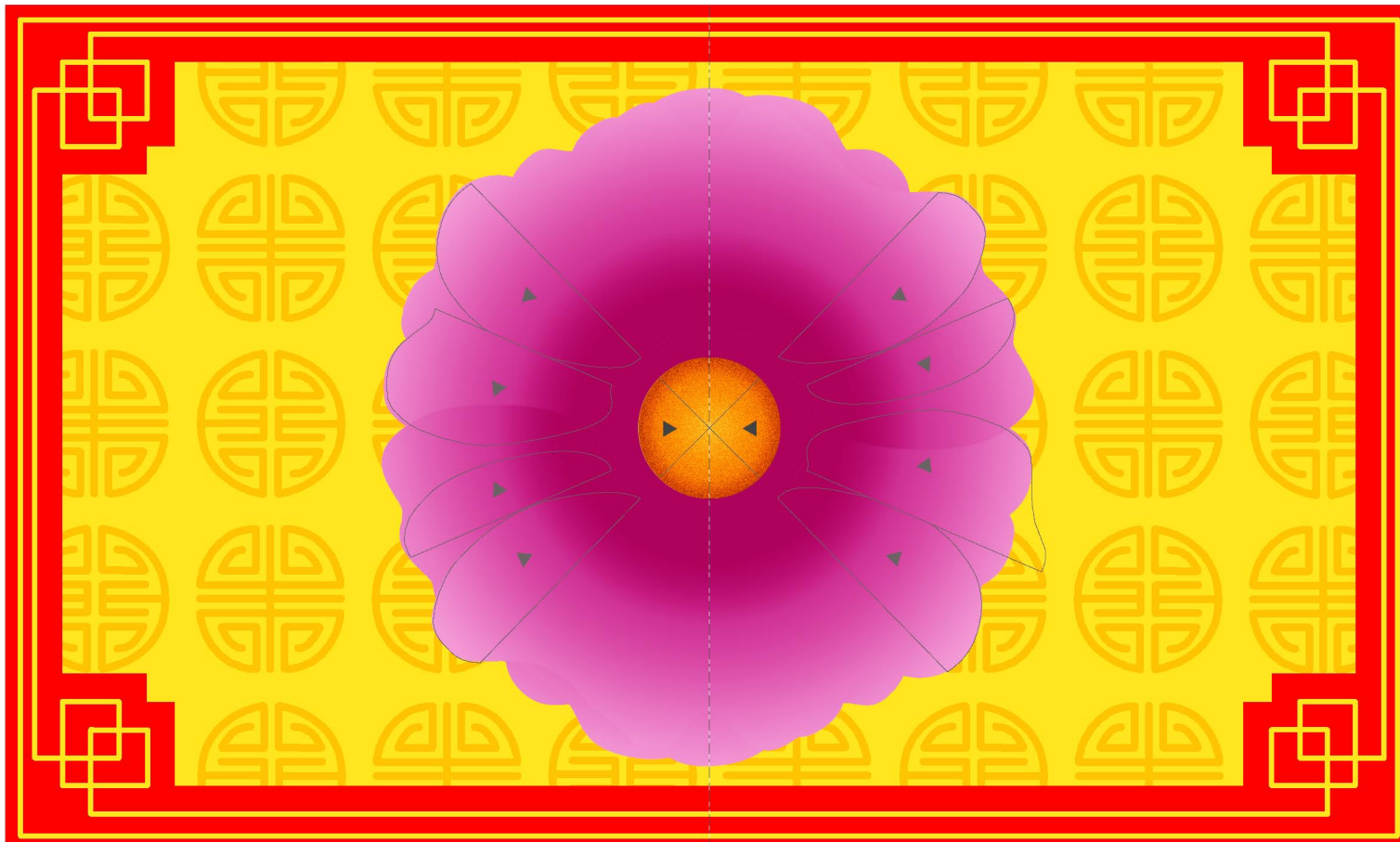
● Butterfly (Left)



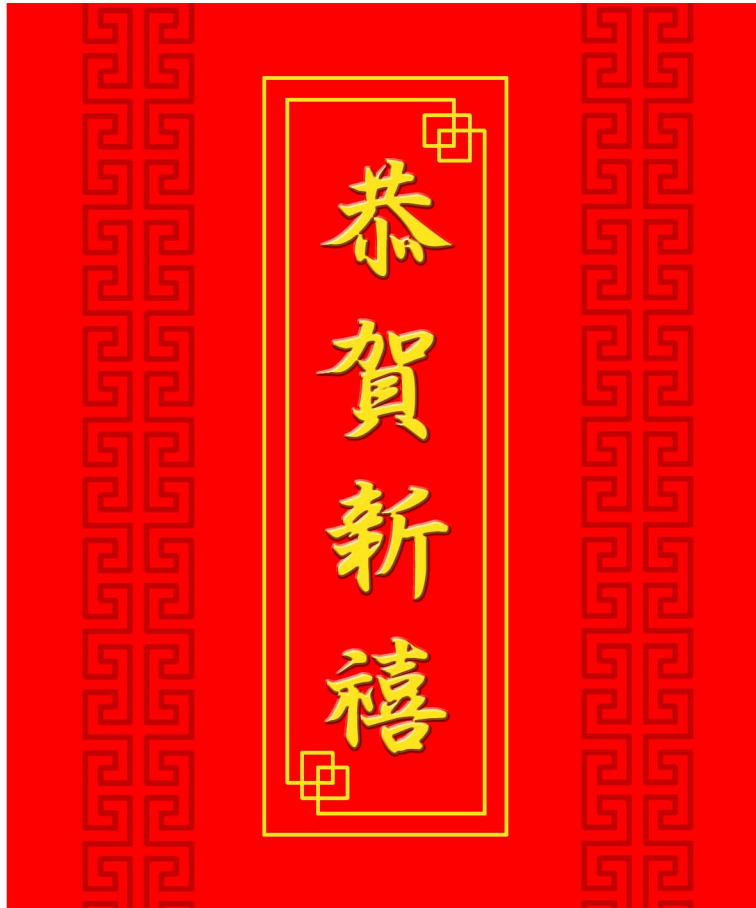
● Butterfly (Right)



● Base



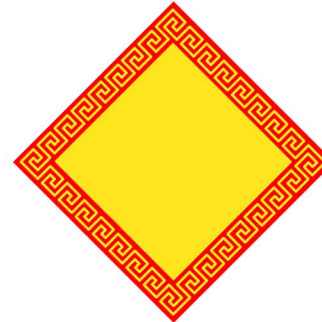
● Front cover



● Back cover



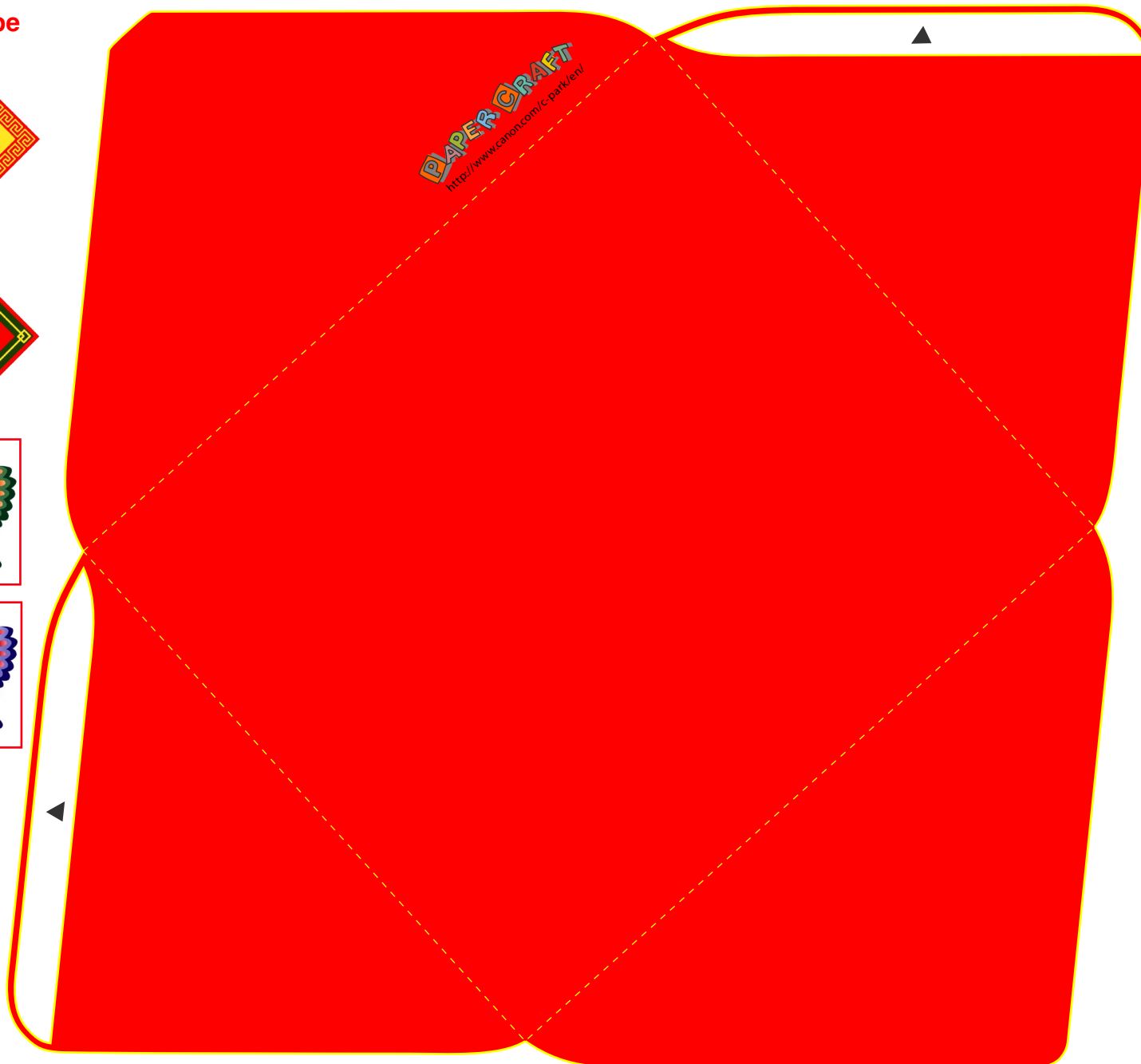
● Stickers



Canon Pop-up Card (Chinese New Year) : Pattern

Canon® is a registered trademark of Canon Inc. © HIROKO

● Envelope



Assembly Instructions

