



Tools	Notation Key
Scissors	——— Scissors line
Paste, or woodwork glue Mountain fold
Stencil pen, or bodkin	- - - - - Valley fold
Ruler	+ Glue spot
	○ Glue reverse side
	A1、B1 Parts No.
	+A1、+B1 Numbers of parts to be attached

- ◆ The Assembly instructions are divided into three blocks:
A (Card), B (Teddy Bear) and C (Wreath).
Follow the instructions for each block to assemble your card.

<Caution>

- ※ Keep scissors and glue away from small children.
- ※ Be careful not to cut your fingers when using scissors.





Card parts

Refer to Assembly Instructions: Page1.



A1 Card

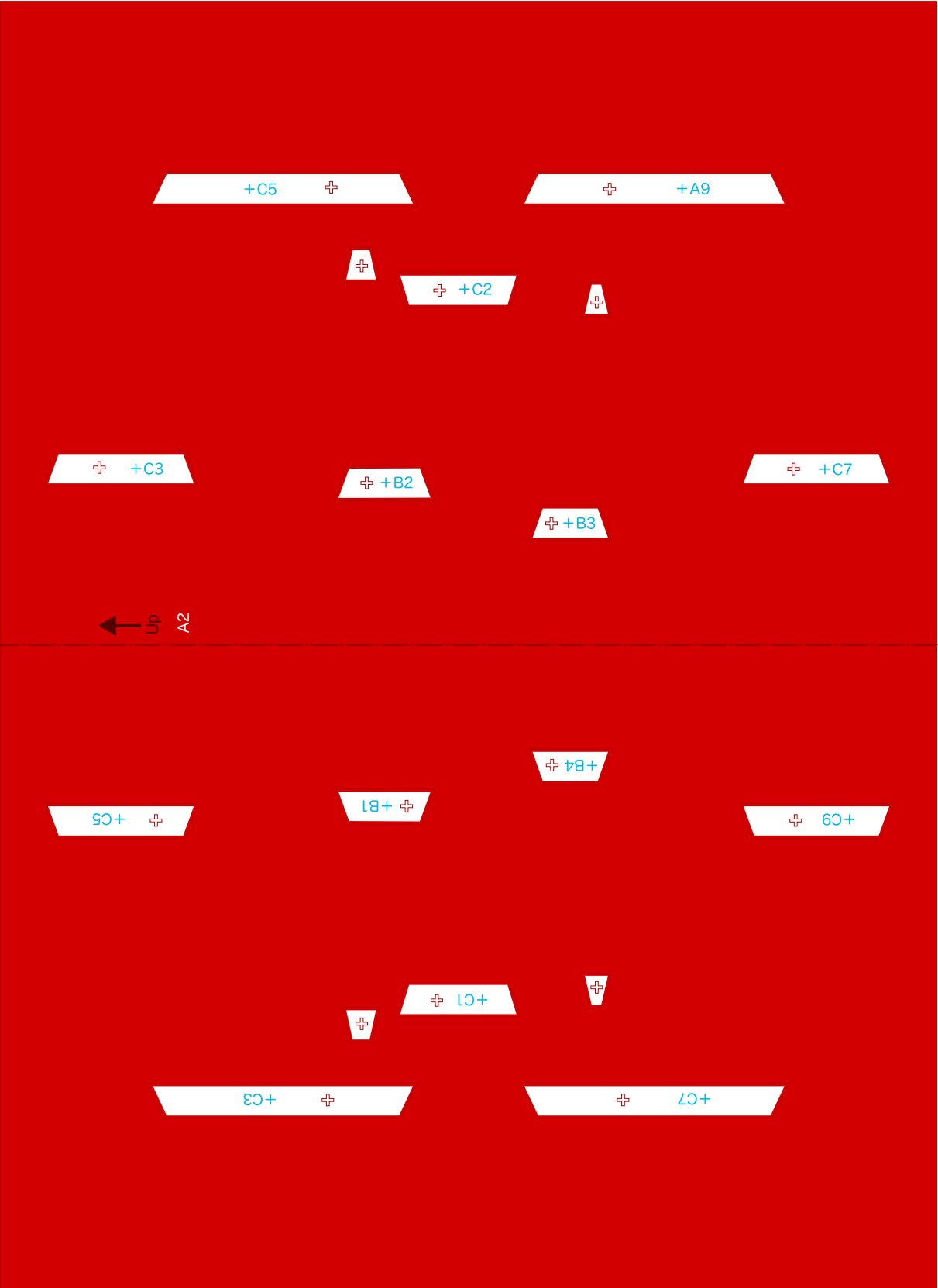
Message

Area for writing a message, featuring ten horizontal dotted lines on a white background.



Card parts

Refer to Assembly Instructions: Page1.

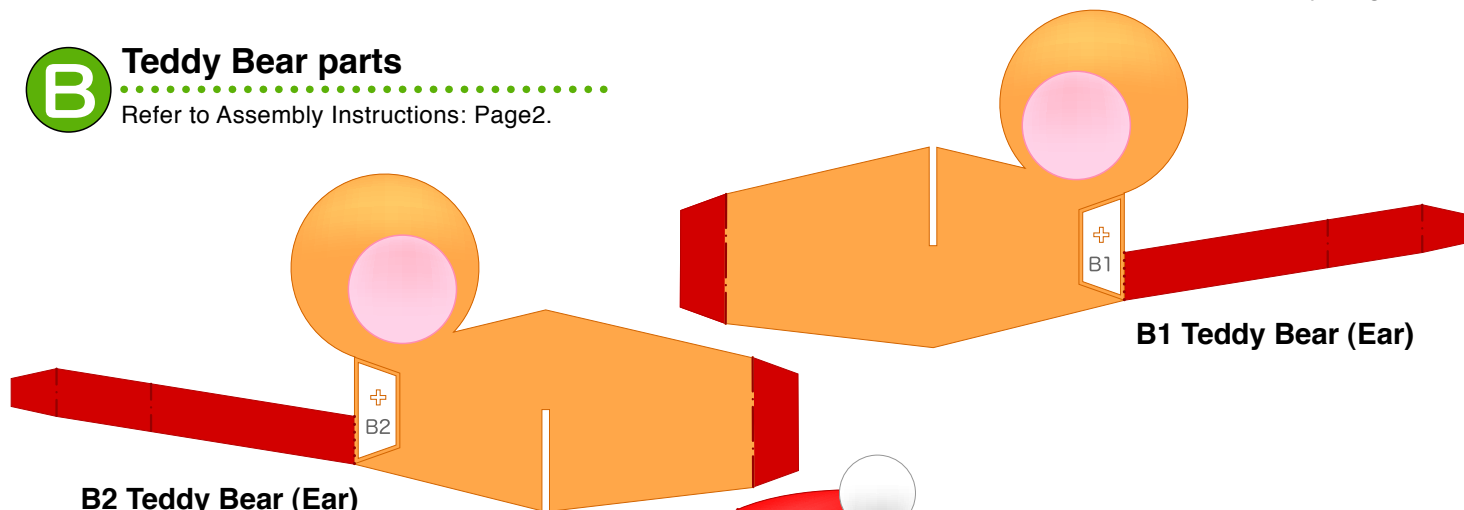


A2 Card



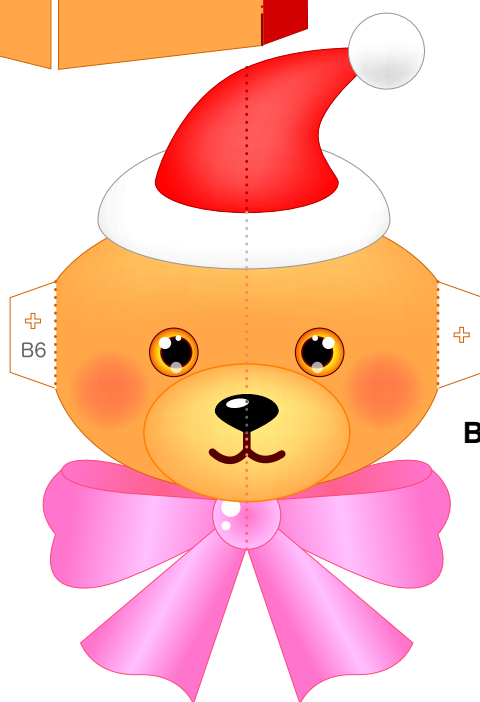
Teddy Bear parts

Refer to Assembly Instructions: Page2.

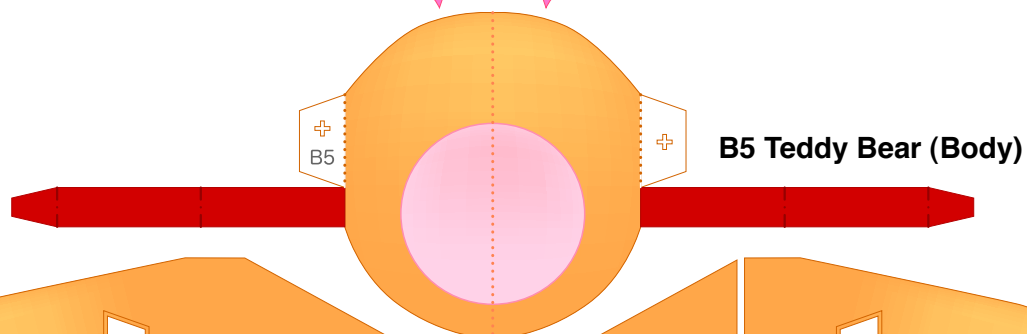


B1 Teddy Bear (Ear)

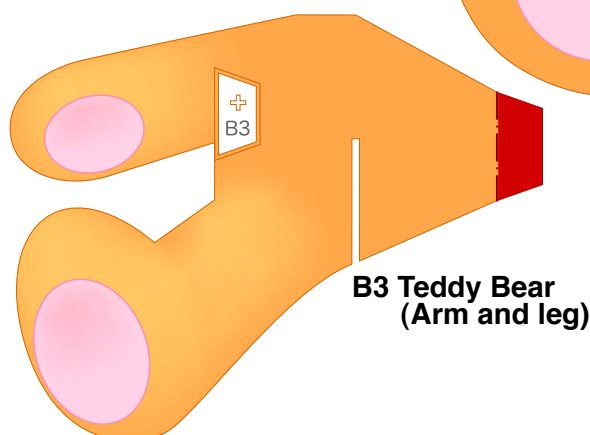
B2 Teddy Bear (Ear)



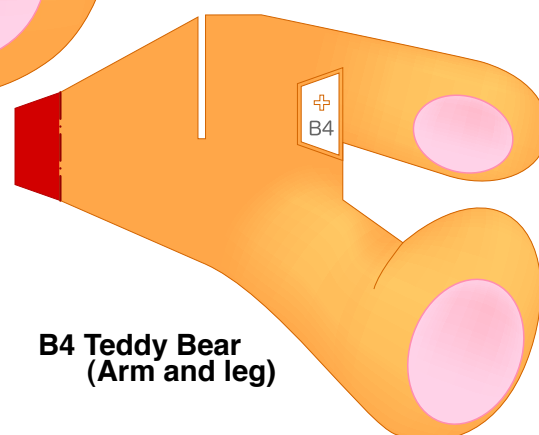
B6 Teddy Bear (Face)



B5 Teddy Bear (Body)



**B3 Teddy Bear
(Arm and leg)**

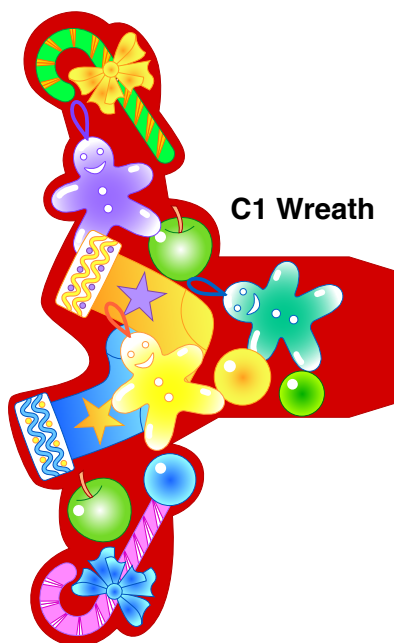


**B4 Teddy Bear
(Arm and leg)**



Wreath parts

Refer to Assembly Instructions: Page2, Page3.

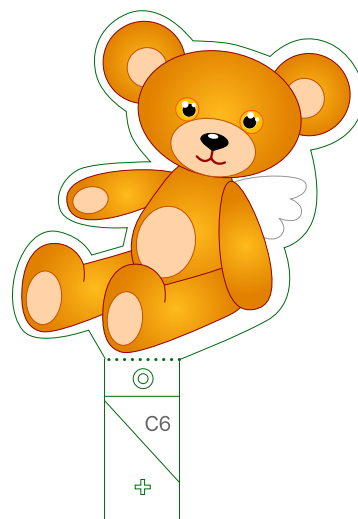


C1 Wreath



C2 Wreath

C6 Teddy Bear



C4 Snowman

C5 Wreath



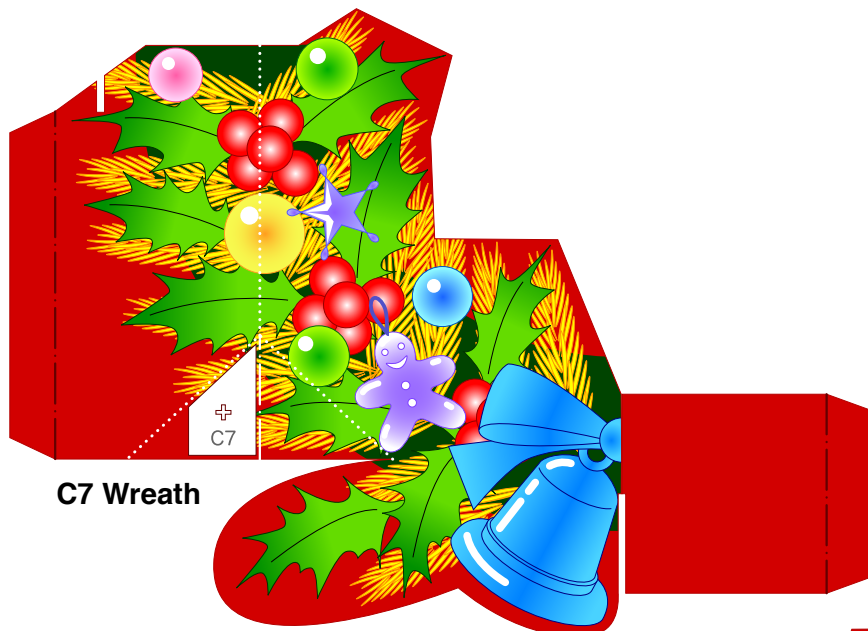
C3 Wreath



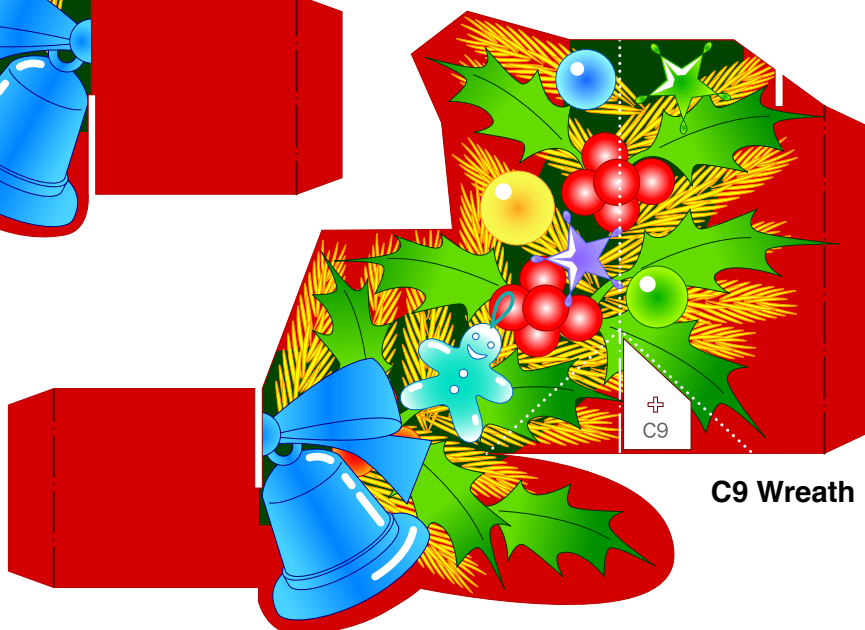


Wreath parts

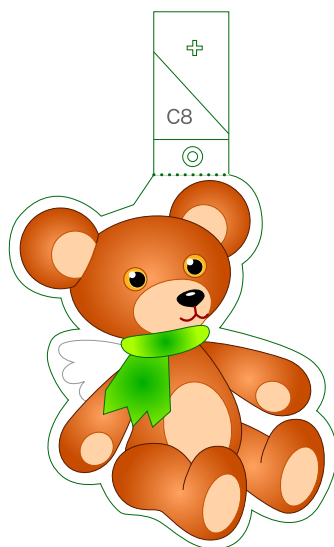
Refer to Assembly Instructions: Page3.



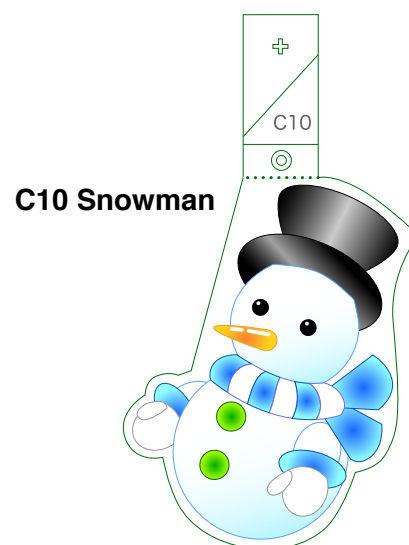
C7 Wreath



C9 Wreath



C8 Teddy Bear



C10 Snowman