

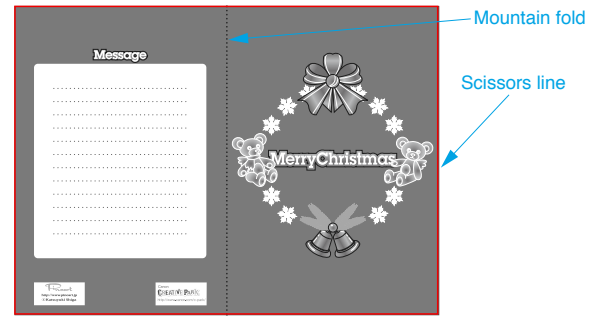


## Assemble the card

Use pattern: Page2, Page3.

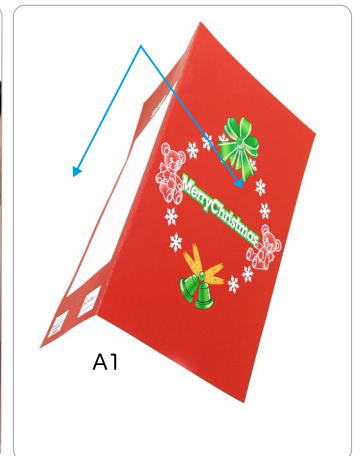
① Cut out A1 by cutting along the lines.

★ Cut along the line marked —.



② Make a mountain fold on A1.

★ Trace along the mountain fold line with a stencil pen, scoring it to make it easier to fold.



Tools	Notation Key
Scissors	<span style="color: red;">—</span> Scissors line
Paste, or woodwork glue	..... Mountain fold
Stencil pen, or bodkin	- - - - - Valley fold
Ruler	+ Glue spot
	⊙ Glue reverse side
	A1、B1 Parts No.
	+A1、+B1 Numbers of parts to be attached

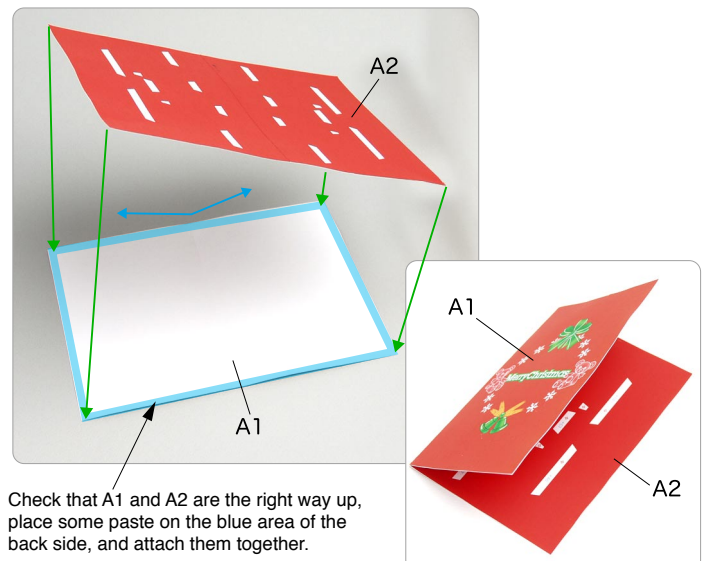
◆ The Assembly instructions are divided into three blocks:  
A (Card), B (Teddy Bear) and C (Wreath).  
Follow the instructions for each block to assemble your card.

### <Caution>

- ※ Keep scissors and glue away from small children.
- ※ Be careful not to cut your fingers when using scissors.

③ Attach A1 and A2, and the card is complete.

★ Using the photo as a guide, attach in the direction of the arrow.

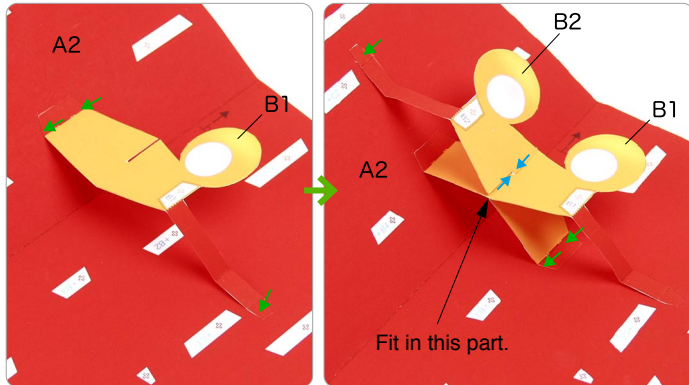


Check that A1 and A2 are the right way up, place some paste on the blue area of the back side, and attach them together.

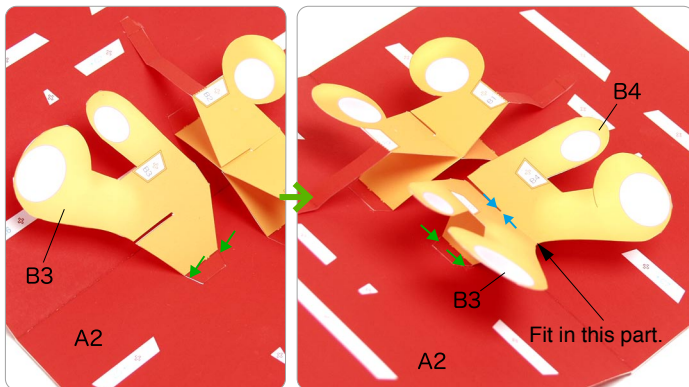
## B Make the Teddy Bear

Use pattern: Page4.

① Fit B1 and B2 together.

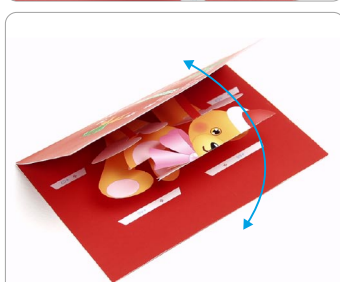
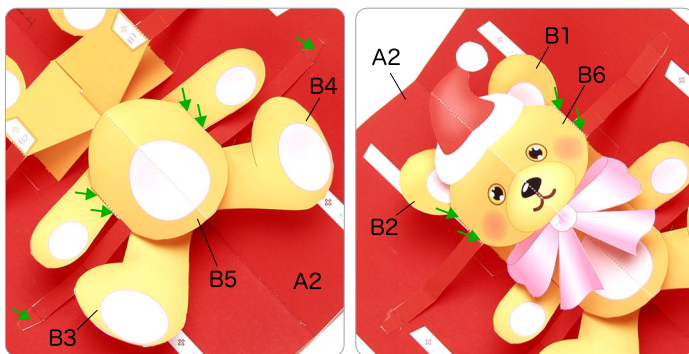


② Fit B3 and B4 together.



③ Attach B5 to B3 and B4, and B6 to B1 and B2.

★ After attaching the parts, open and close to check if the card opens smoothly.



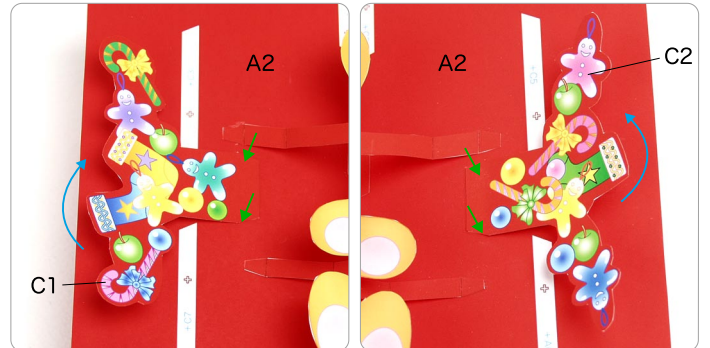
Open and close to check that it moves.



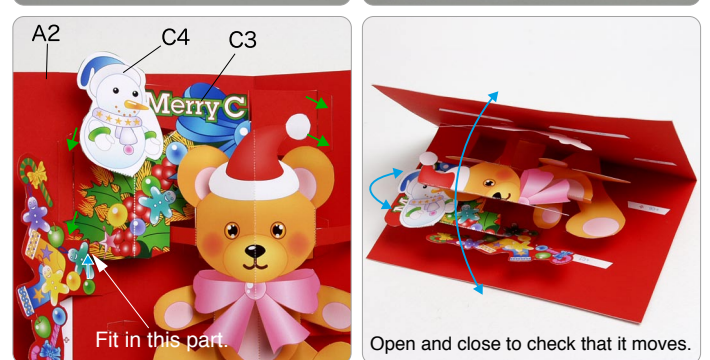
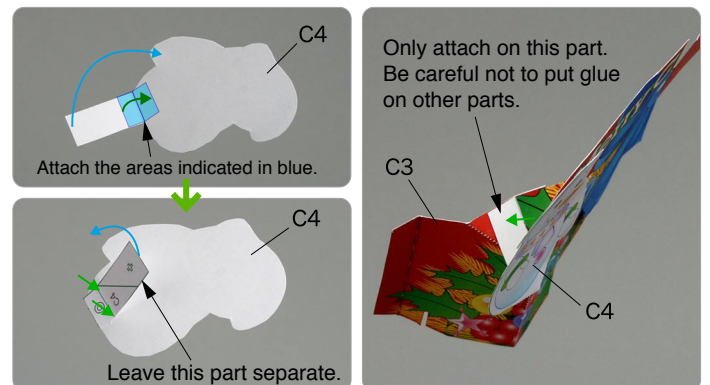
## C Make the Wreath

Use pattern: Page5, Page6.

① Fit C1 and C2 together.

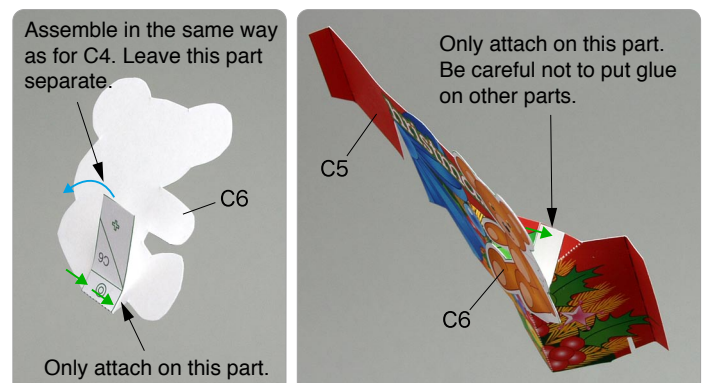


② Assemble C4 and fit it onto C3. Next attach it on the card.



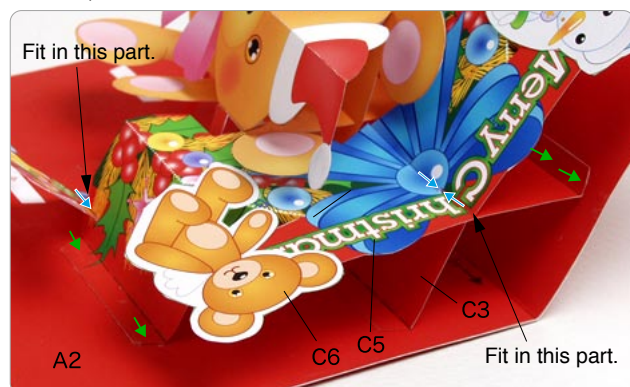
Open and close to check that it moves.

③ Assemble C6 and fit it onto C5.

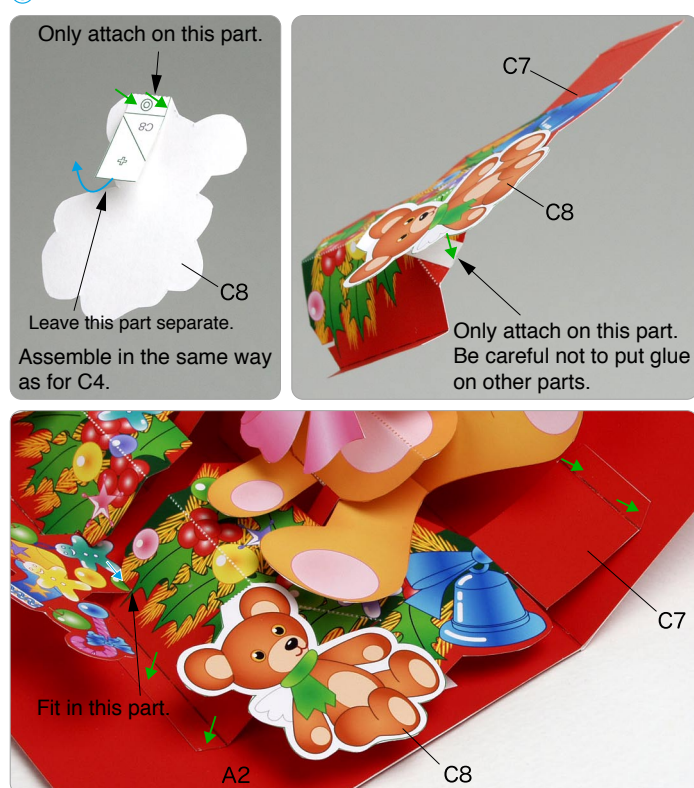




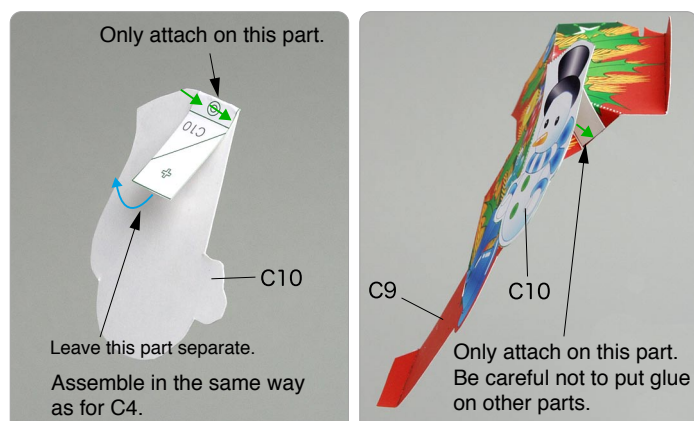
④ Next, attach C5 and C6 onto the card.



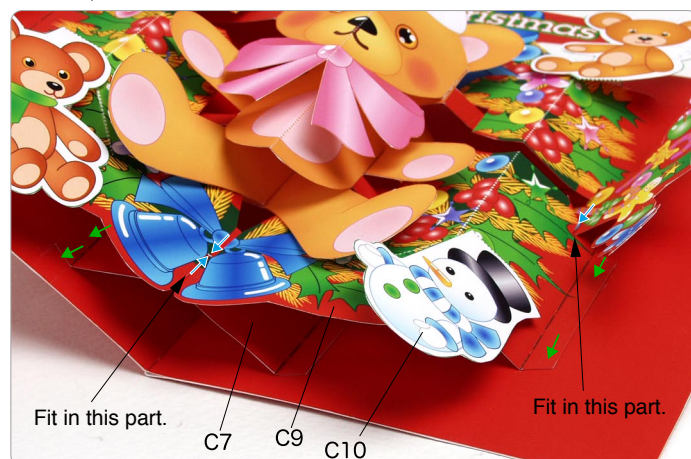
⑤ Assemble C8 and fit it onto C7. Next attach it on the card.



⑥ Assemble C10 and fit it onto C9.



⑦ Next, attach C9 and C10 onto the card.



⑧ Open and close to confirm movement, and finish!

